

How to Access Essentris/AHLTA/CHCS from a Windows PC or Mac

Nicholas Wells, MD

LCDR MC USN

Mac

What do you need

- Mac (MacOS 10.6.x and later)
- CAC reader
- Chrome or Safari
 - Safari requires additional setup
- Citrix download
- About 20 minutes of your time

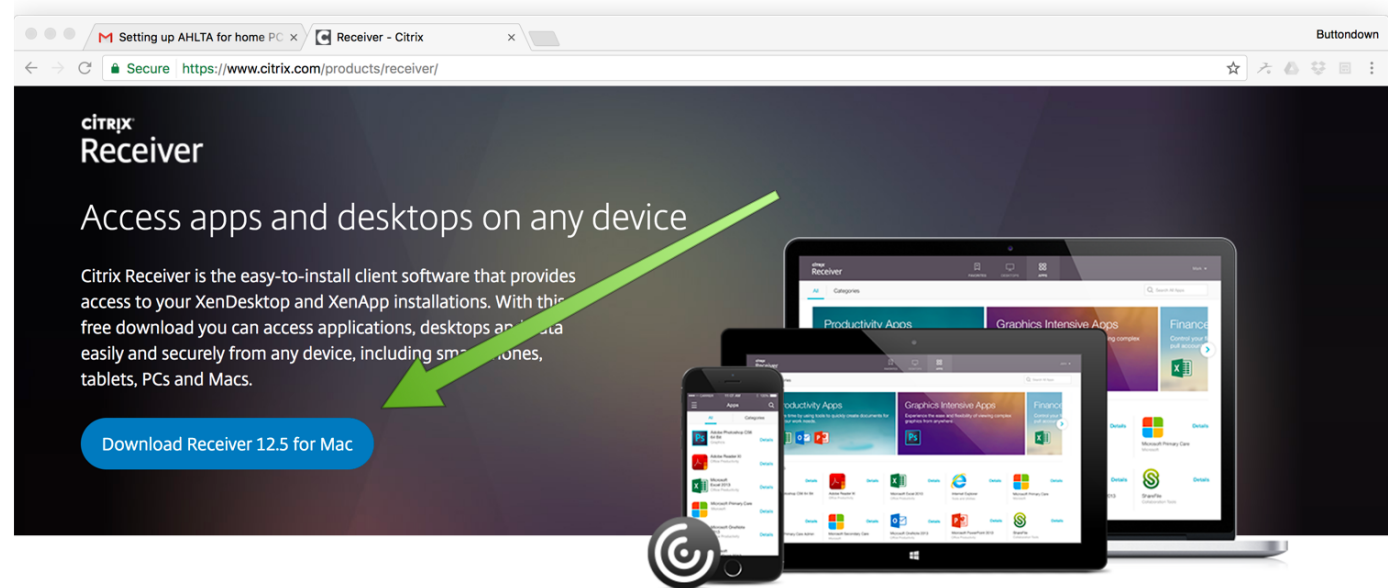


Citrix (Step 1)

- Citrix is a free program that will allow you to remotely connect to Essentris/AHLTA/CHCS
- At the end of installation it will ask you if you want to 'Add an Account'. No! Just click Finish.

Citrix (Step 1)

- 1) Download [Citrix](https://www.citrix.com/products/receiver/)

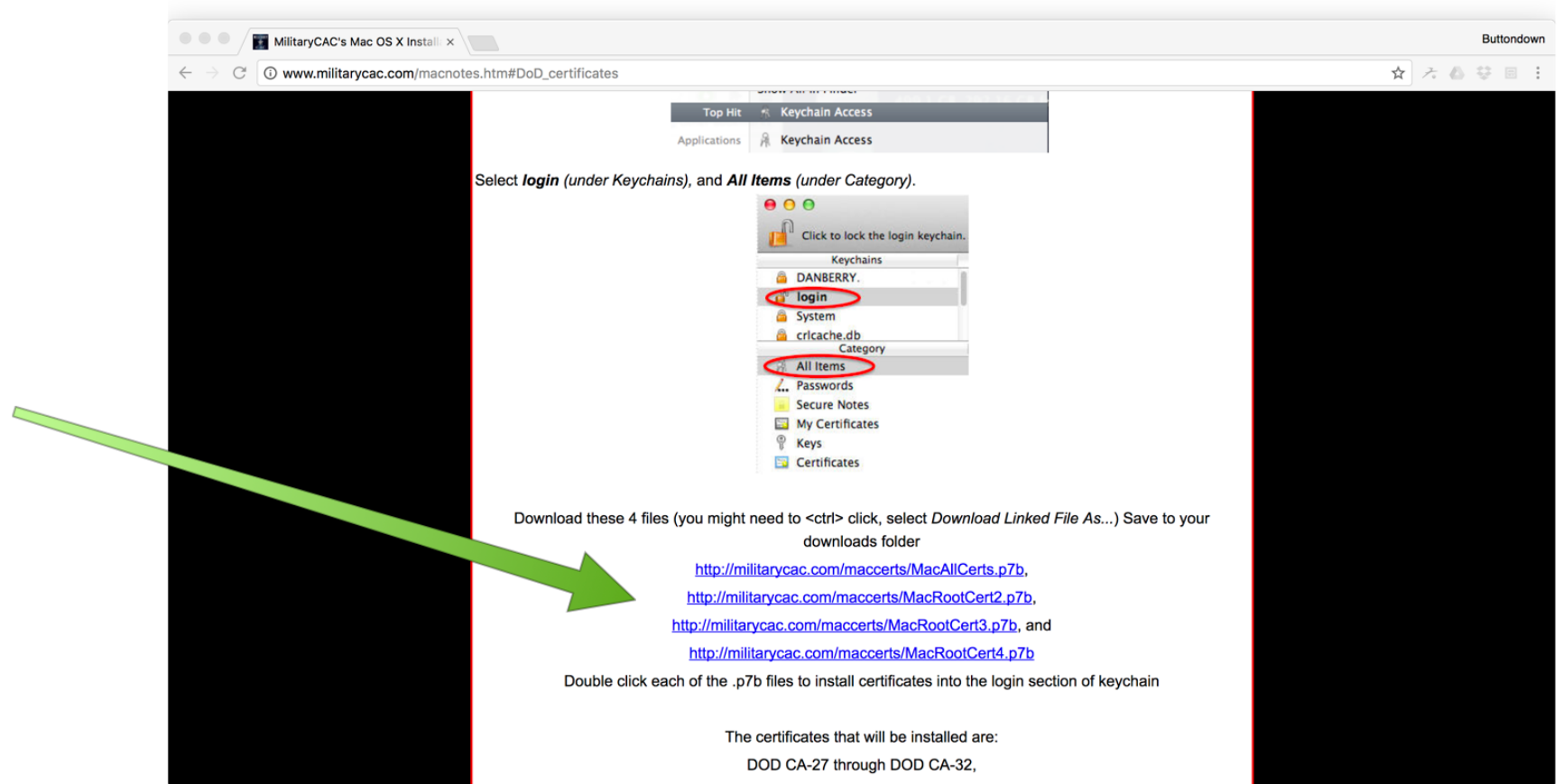


About Installing Citrix Receiver

- ✓ Where can I download Citrix Receiver on other platforms and devices?

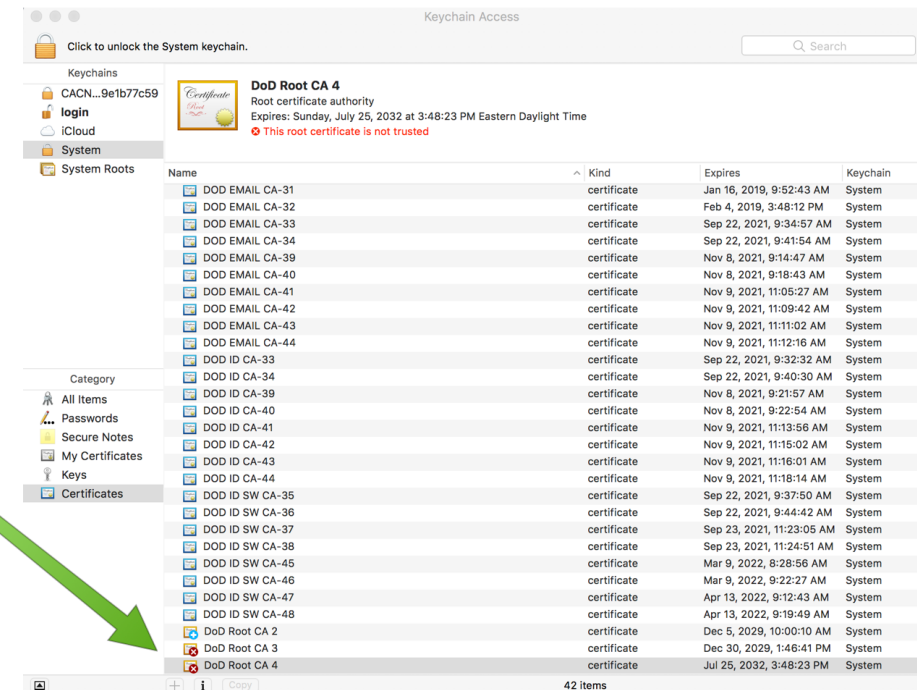
Download Certificates (Step 2)

- Download and install the five [DoD Certificate files](#)



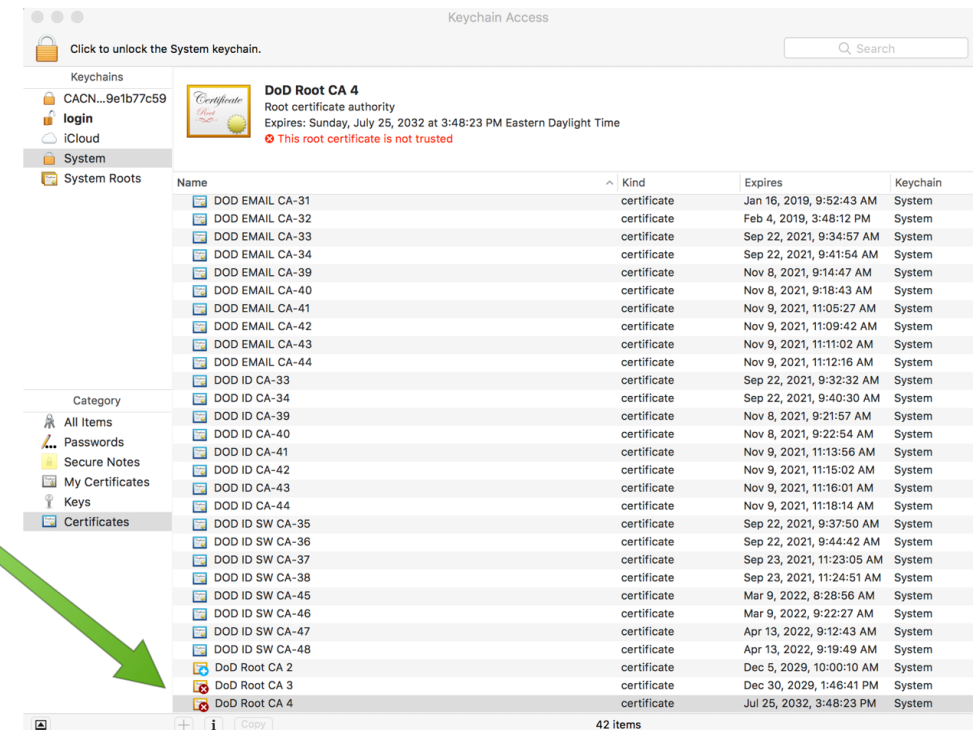
Trust DoD Root Certificates (Step 3)

- With CAC inserted into reader go to your Keychain Access (you can find this with Finder)
- Under 'System Certificates' locate DoD Root CA 2-5.



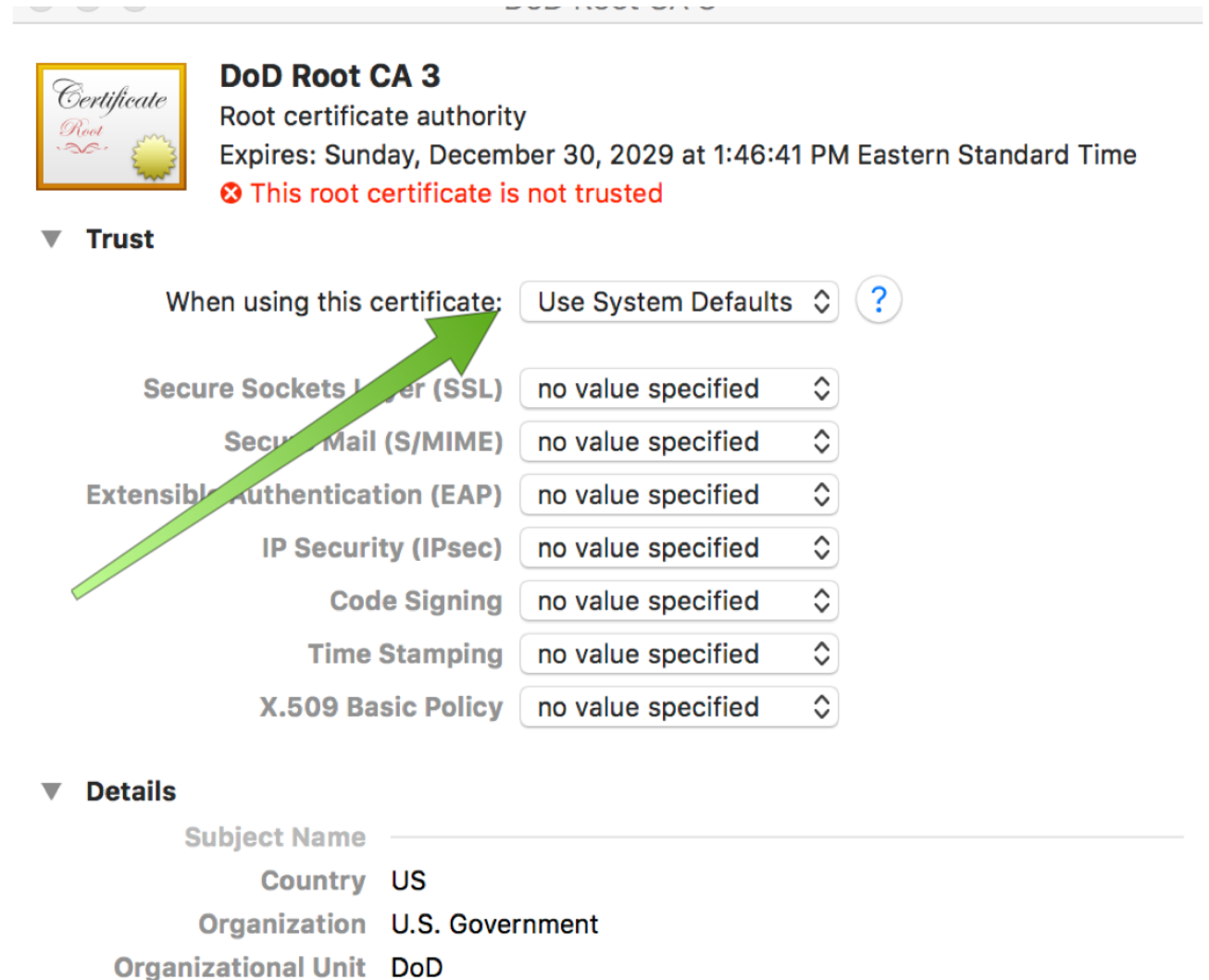
Trust DoD Root Certificates

- If there is a red X you need to manual set your Mac to trust these certificates



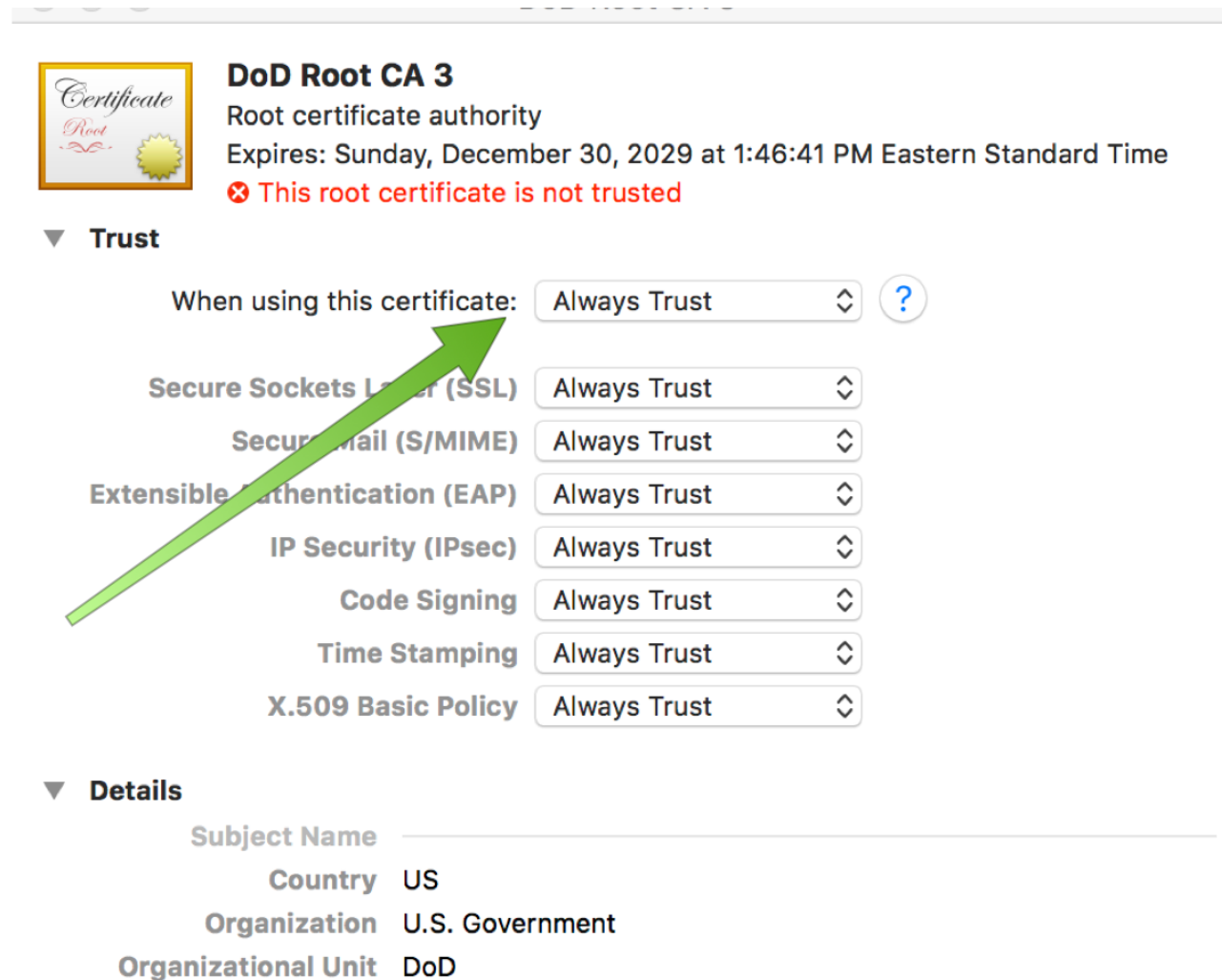
Trust DoD Root Certificates

- Double click on the red X'd DoD Root Certificate
- Click on Trust and change the "When using this certificate" to 'Always trust' then exit out the window and save with admin password.
- Complete this with each DoD Root Certificate that is untrusted.



Trust DoD Root Certificates

- Double click on the red X'd DoD Root Certificate
- Click on Trust and change the "When using this certificate" to 'Always trust' then exit out the window and save with admin password.
- Complete this with each DoD Root Certificate that is untrusted.

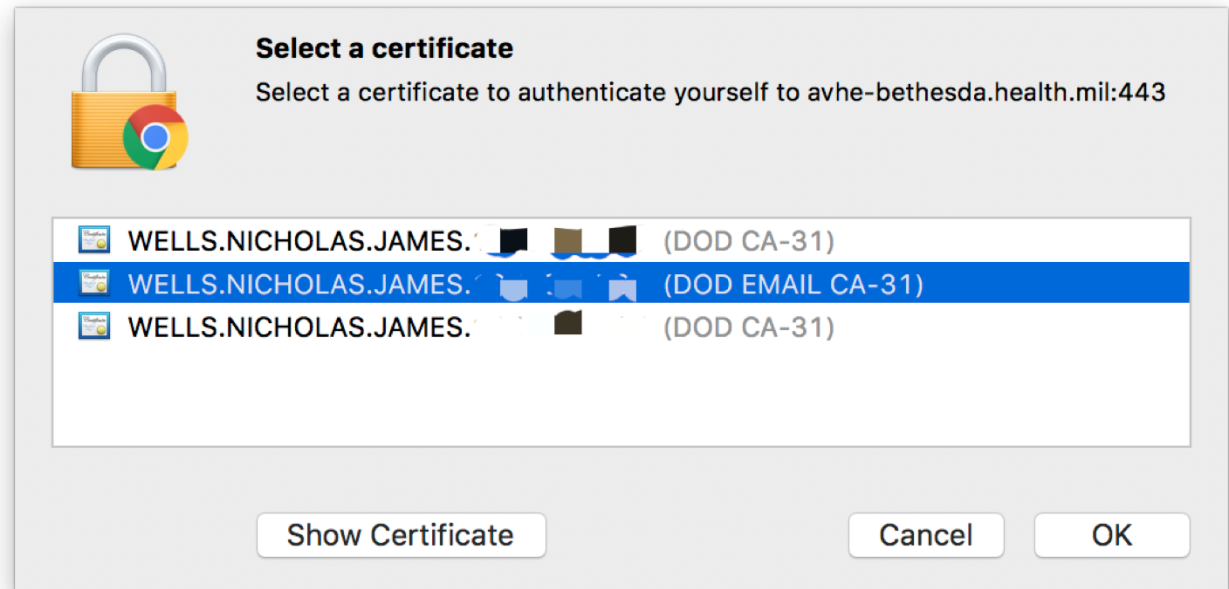


Accessing AVHE

- <https://avhe.health.mil>

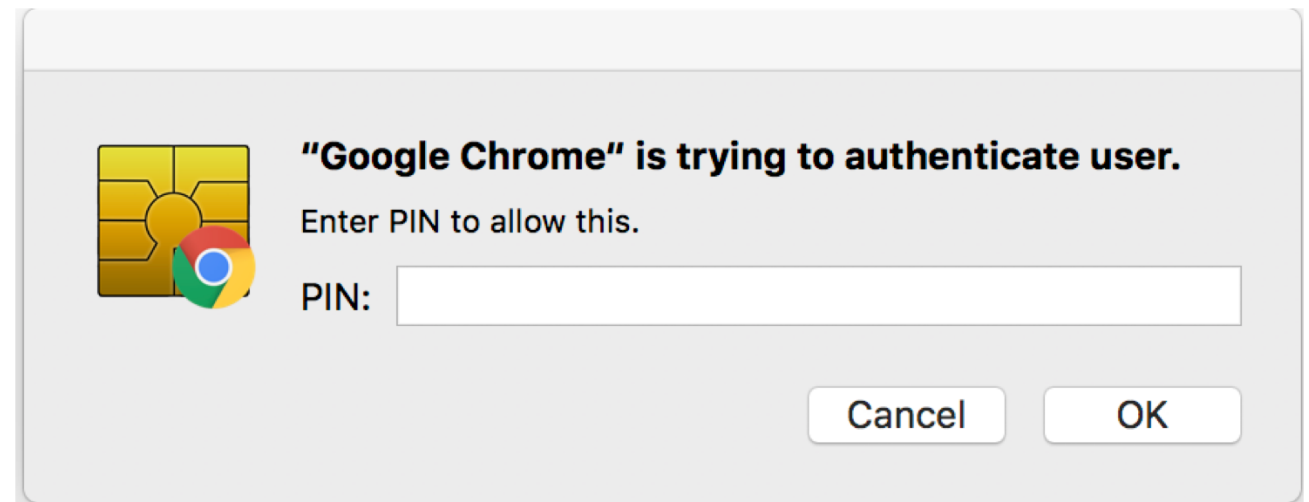
Accessing AVHE

- <https://avhe.health.mil>
- Select DoD Email certificate
- Press 'OK'

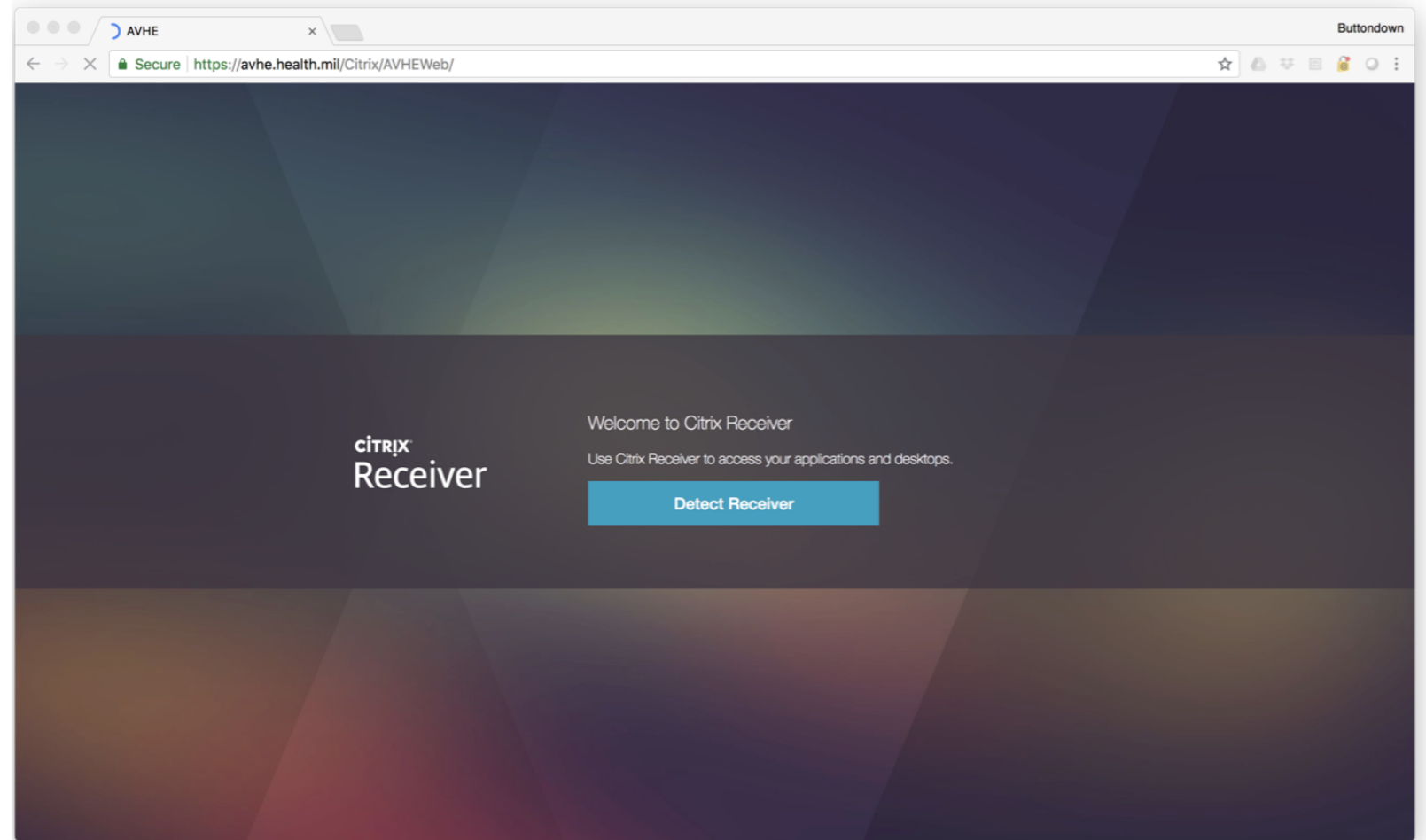


Accessing AVHE

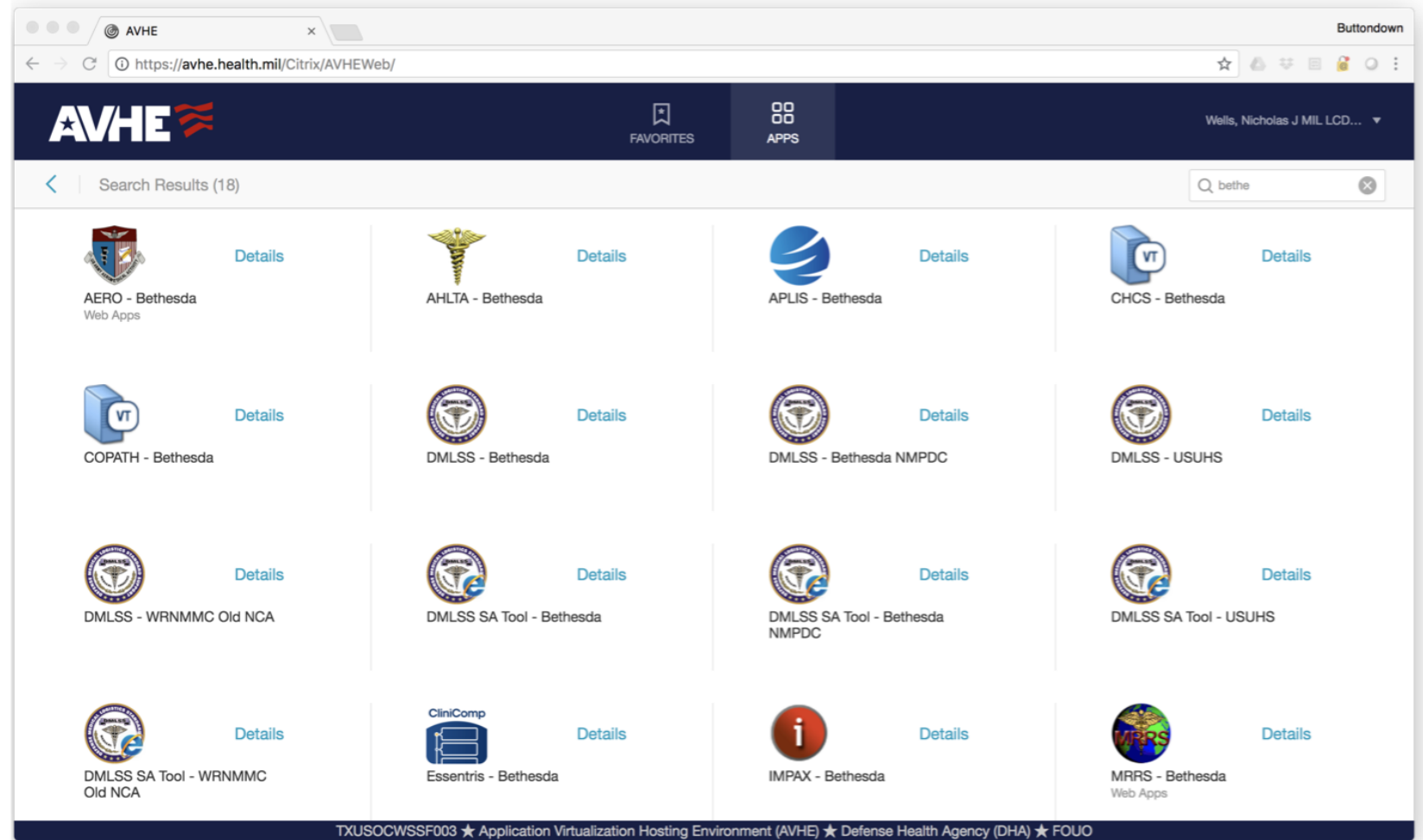
- Enter CAC pin (sometimes will ask more than once)



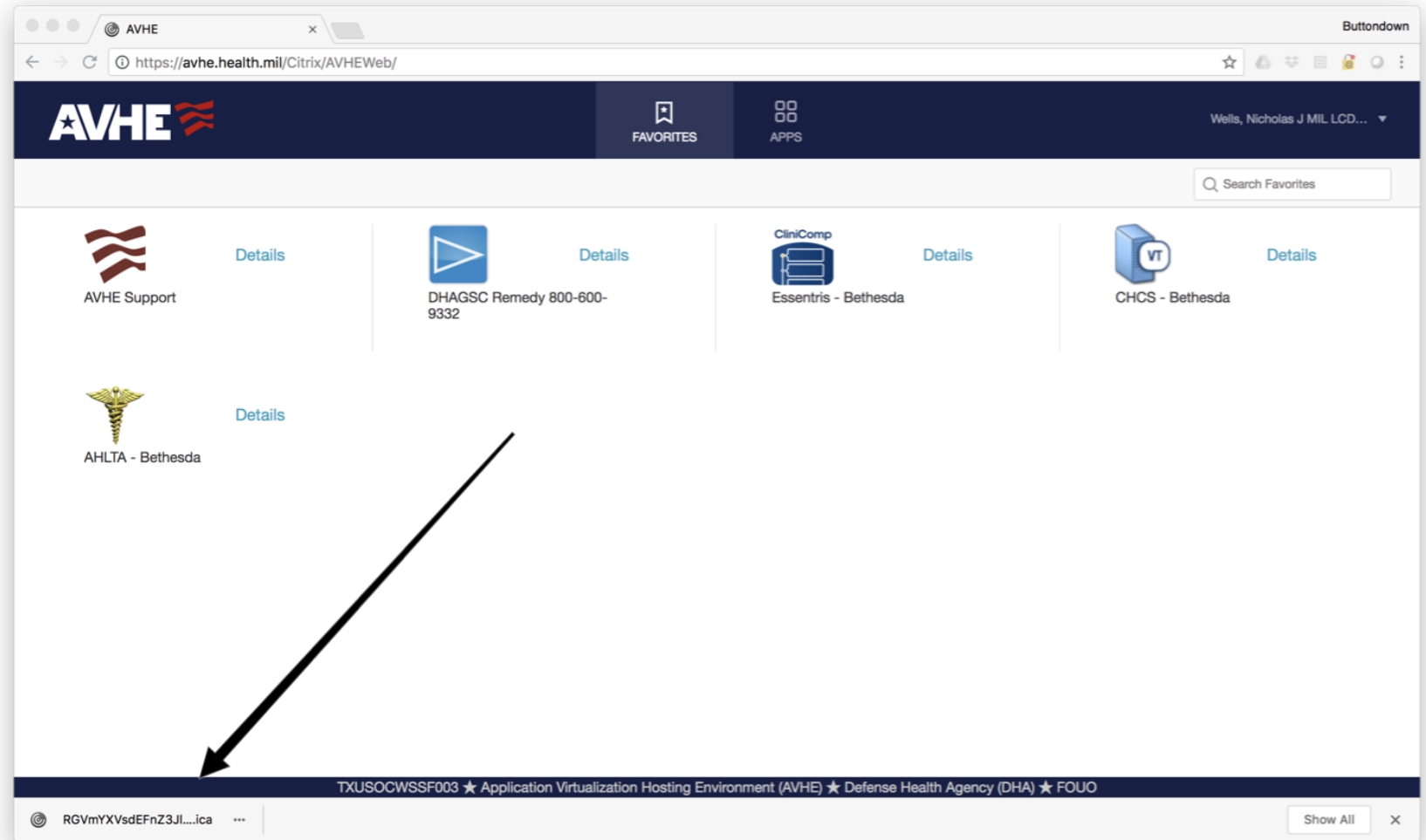
Accessing AVHE



Accessing AVHE

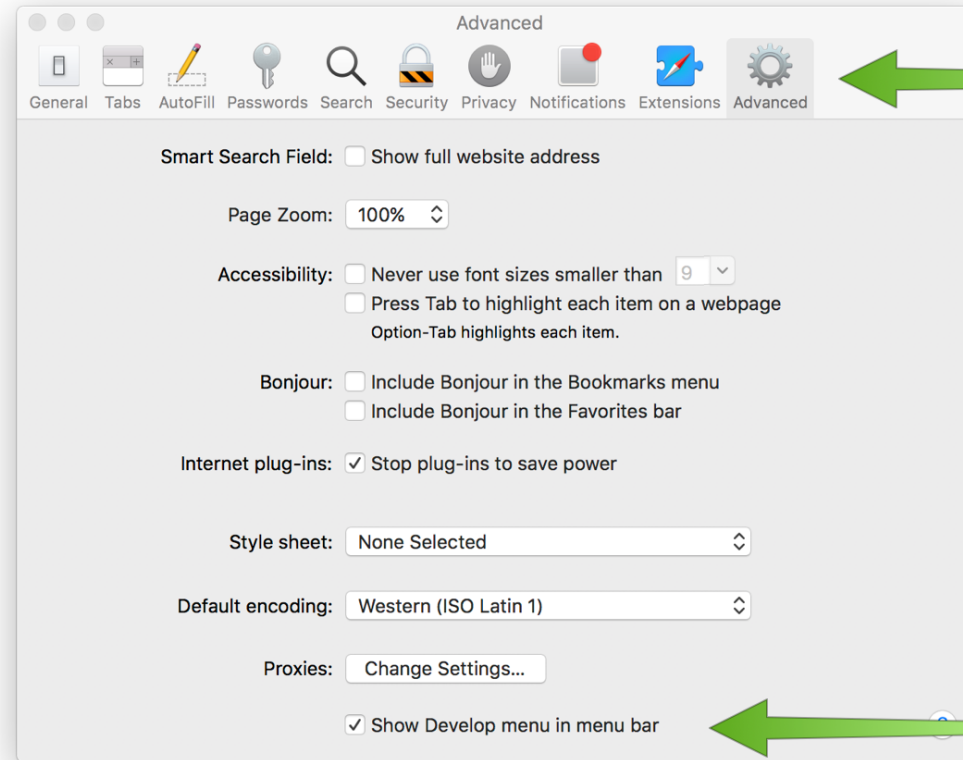


Accessing AVHE



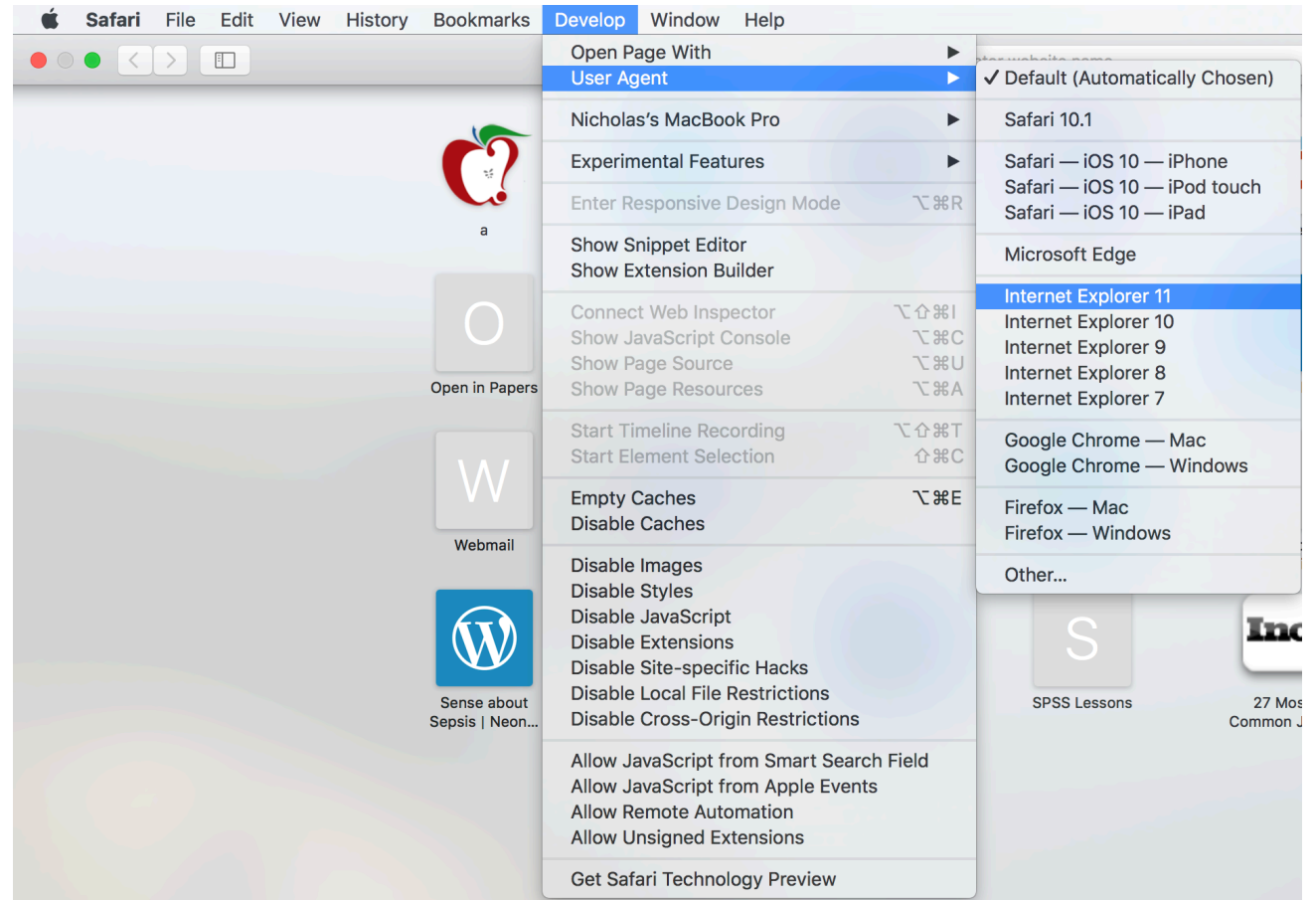
Safari Adjustment

- You can also use Safari as your main browser with the below adjustments
- Open Safari and click on Safari preferences
- Go to 'Advanced', then check the box "Show Develop menu in menu bar)
- Close the window



Safari Adjustment

- Click on Develop -> User agent -> Select mac



Windows

PC Initial Setup– Windows 10

1. Download and install (click:) [Citrix Receiver](#) . At the end of installation and also after computer restart it will ask you if you want to 'Add an Account'. No. Just click Finish/Don't Ask Again.
2. Download and install (click:) [DOD Certificates](#) This link has picture instructions and to get the file, click link, and scroll down to where it says "Download InstallRoot 5.2 from" and select the link that says 'MilitaryCAC'

Webmail

- To access work email go to <https://web.mail.mil> and select email certificate and enter pin (does not need Citrix for email access).
 - Questions or concerns please contact me at nicholas.j.wells12.mil@mail.mil